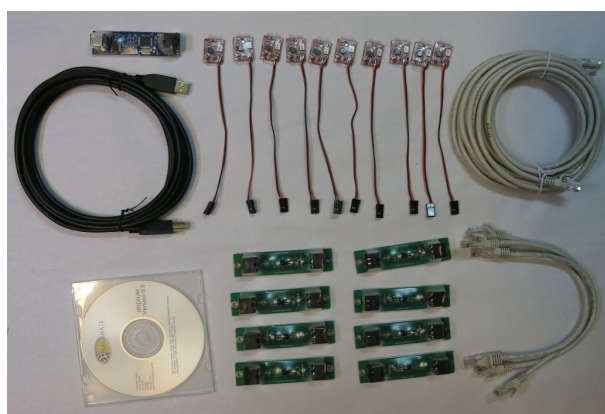




IRIDium RC Lap Counter



RcClickNGo Timer - 2 seconds delay before Formula 1 start - 3.5 seconds minimum lap time

File Race Format View Data Racers Settings Help

ID	1 Minute Race	Lap	Lap Time	Median	Best Lap	Qualification
2	Mark	4	6.67	4.78	4.10	
3	1002077	5	5.43	6.12	4.46	
1	John	3	6.23	5.07	5.07	
4	Steve	3	5.45	7.21	5.45	
5		0	0.00			
6		0	0.00			
7		0	0.00			
8		0	0.00			
9		0	0.00			
10		0	0.00			
11		0	0.00			
12		0	0.00			
13		0	0.00			
14		0	0.00			

0:02

Abort

User Manual IRIDium RC Lap Counter and the Click N GO Software Version 6.5

www.TrackmateRacing.com

2. Features

Software Features

- supports Practice, Qualifying timed, Qualifying Laps, Race Timed, Race Laps
- Auto detect ID and display name.. No names to enter before race just click GO
- view all lap times - you can also sort lap times
- view race summary - number of laps, best lap, median, number of crashes and crash percentage etc.
- print laps
- print summary
- save data to disk - as text or "Lap" and "Summary" files.
- open and view saved data
- Instant Start or Formula One start
- reset best lap time for any racer - just click on it , useful in practice
- sounds - get ready, go, White flag, checkered flag, race over, 10 seconds left
- displays green flag, yellow flag, checkered flag and race over during race
- at end of race - waits for everyone to complete current lap
- updated help file
- track length and scale in settings
- start race with lap 0 or 1 in settings
- display MPH
- display Median (a median of 4.5 seconds means 50% of your lap times are below 4.5 and 50% above 4.5)
- configure data to display Lag behind, lag First, median, or MPH by clicking on column heading even on the fly during a race
- demo mode - you can test all the features with no hardware attached
- Com port and Interface Auto detect; for easy Installations
- Merge several saved summaries together and sort on any field, useful when qualifying more than 14 racers
- Auto Save Data
- Auto Print
- hot keys

3. Hardware Installation

3.1 PC requirements

PC requirements

Works with Desk top computers, Laptops, Netbooks

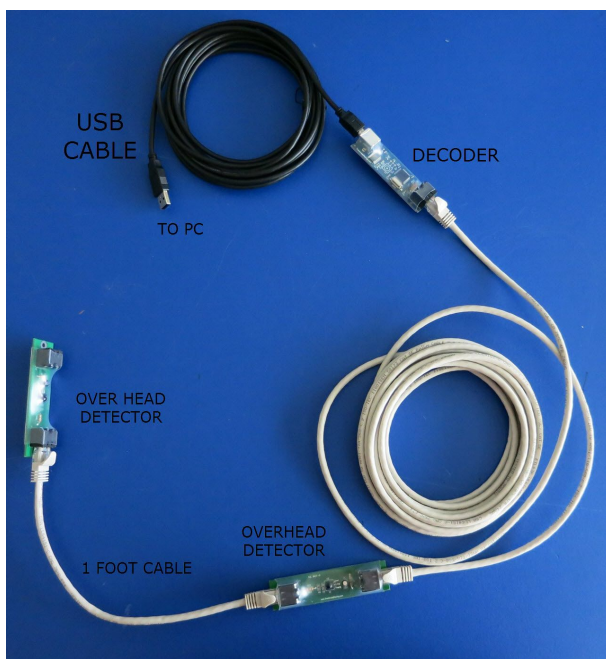
XP,Vista,Windows 7,Windows 8

Computer must have sound capability and directx7 or higher installed (supplied on CD)

3.2 Installation

Trackmate Iridium RC Lap Counter Hardware

Make a bridge to hold the sensors about 22" above the track but 7" for small indoor tracks such as Mini-z. The end sensors should be about 6 inches from edge of lane. Use the 12 inch cables to interconnect the sensors. Do not recess overhead detectors. For small indoor tracks for small scale RC cars you should put blinders on the overhead bridge to limit range of transponder sensing.



The transponders should be under the windshield. There should be nothing obstructing the infrared LED which is the small white square.

The transponders red LED will blink about every 10 seconds when it is powered on.

The Green LED on controller should be on when it is powered on

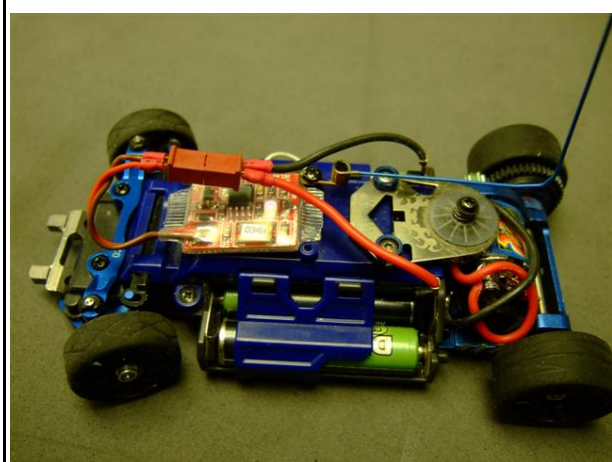
The Yellow LED will come on when it detects a transponder



Picture of small indoor track for 1:24 scale Mini-z cars. Only one overhead detector was used for the two foot wide Lane



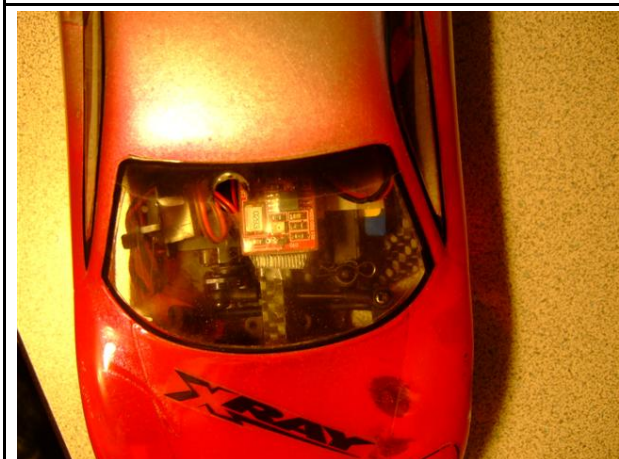
Customer used plastic pipe to mount overhead detectors on outdoor dirt track



Mini-z - Transponder wired directly to power

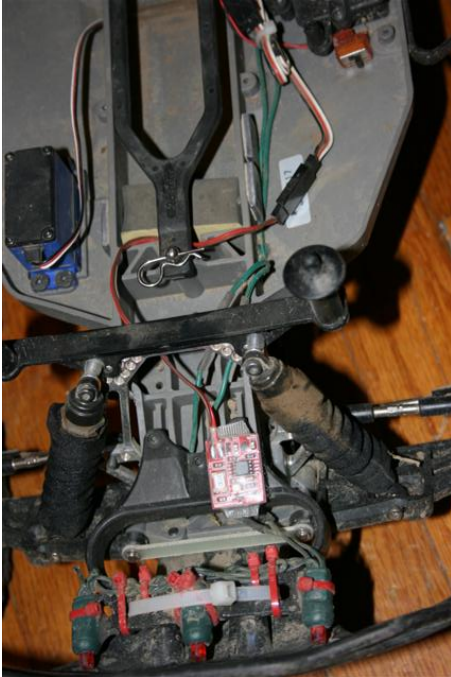


Mini-z with tinted window, no problem



4. Installing Transponders

4.1 Large Scale

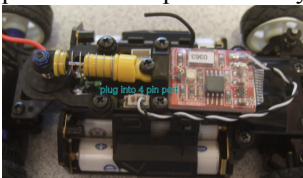


4.2 Mini-z

Transponder Transponder wired for mini-z with 2.4ghz radio

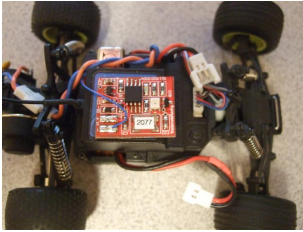
IF your mini-z only has a 3 pin connector then plug transponder in the 3 pin connector

If your mini-z has a 3 pin and a 4 pin connector then plug the transponder in the **4 pin** connector as shown below. Transponder will be powered only when the power switch is on.



4.3 Micro-t

Transponder installed in a Micro-t. Heat shrink was removed to make transponder thinner. Thinner wires were used and soldered inside radio. Don't worry about having clear lexan above it, the infrared will work right through the stock body. Some very thin double sided tape was used to hold it in place.



5. Software

5.1 Installaton Settings

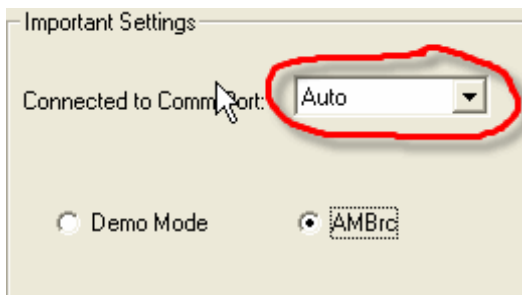
Install Software

Run setup on the CD to install the ClickAndGo Lap Counter software. It will install a shortcut on your desktop named IRIDIum.

After running the program you will need to select the COM port. See below on how to know what com ports you have.

Version 6.0 or higher now has an AUTO detect for Com port.

Note it will not work with systems sold prior to 2009. In the *Settings>Installation Settings* menu simply select Auto for COM port and have the Interface plugged in and powered on, it will automatically search and select the correct COM port.

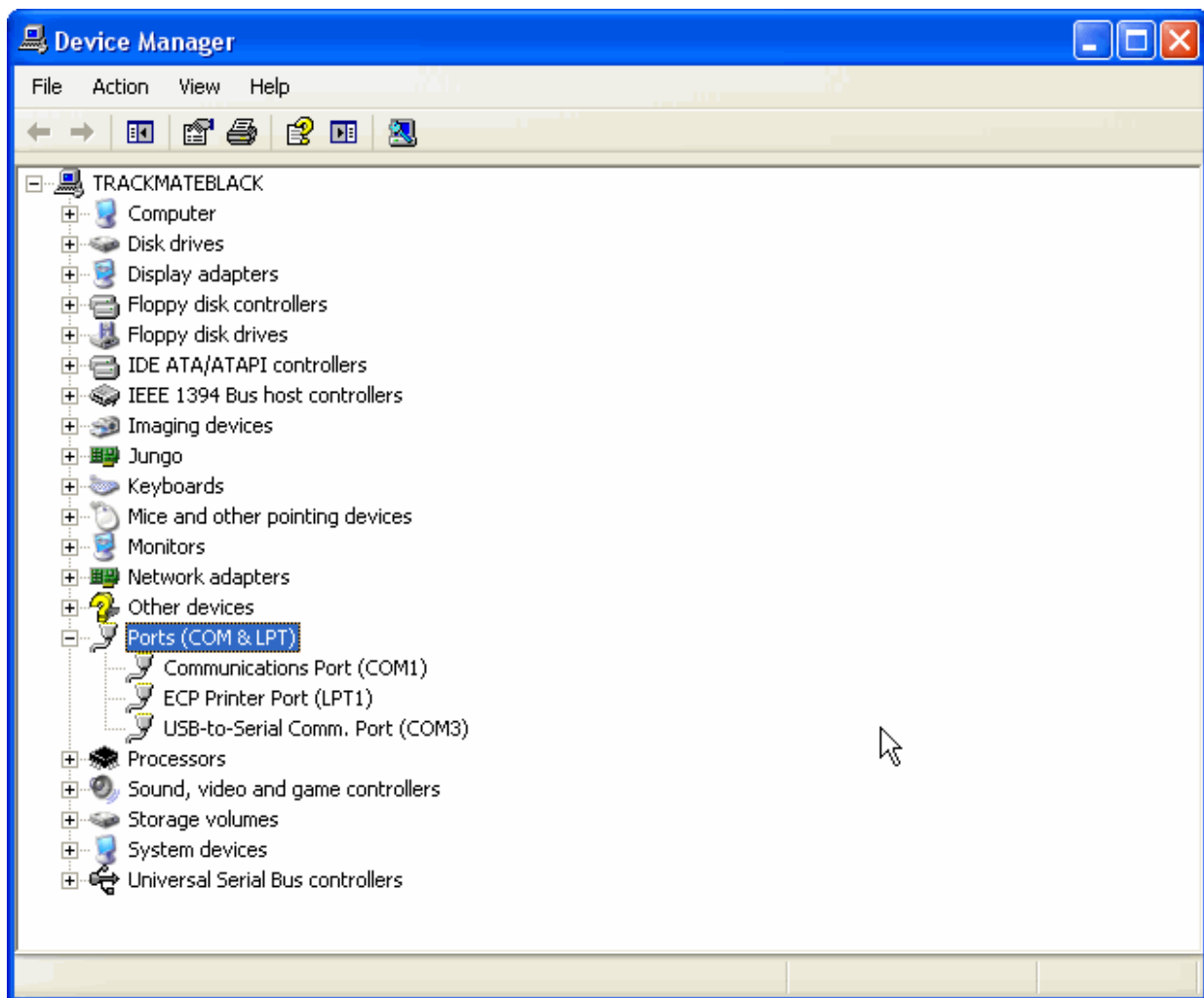


For older versions of the software use the method found below.

Comm port - Com ports 1 to 16 are supported

To find out what com ports are available on your computer click *start ->control panel->system->hardware->device manager->ports*

Here is a sample screen

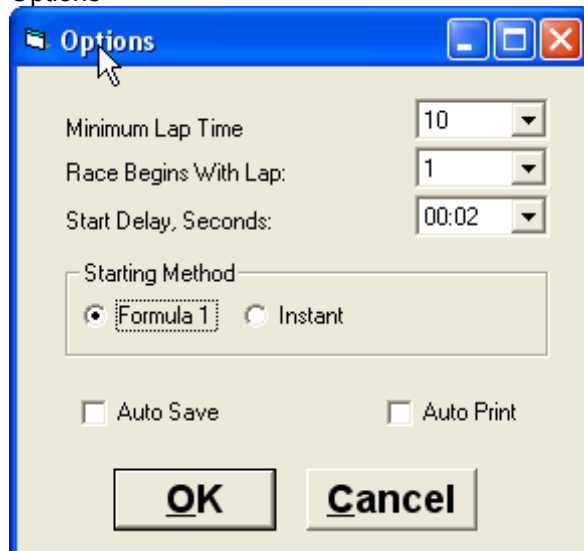


Notice com ports 1 and 3 are available, COM3 is using the USB to serial/com converter

Demo mode - You can select demo mode if you want to try the software without any hardware, the software will simulate lap times.

5.2 Options

Options

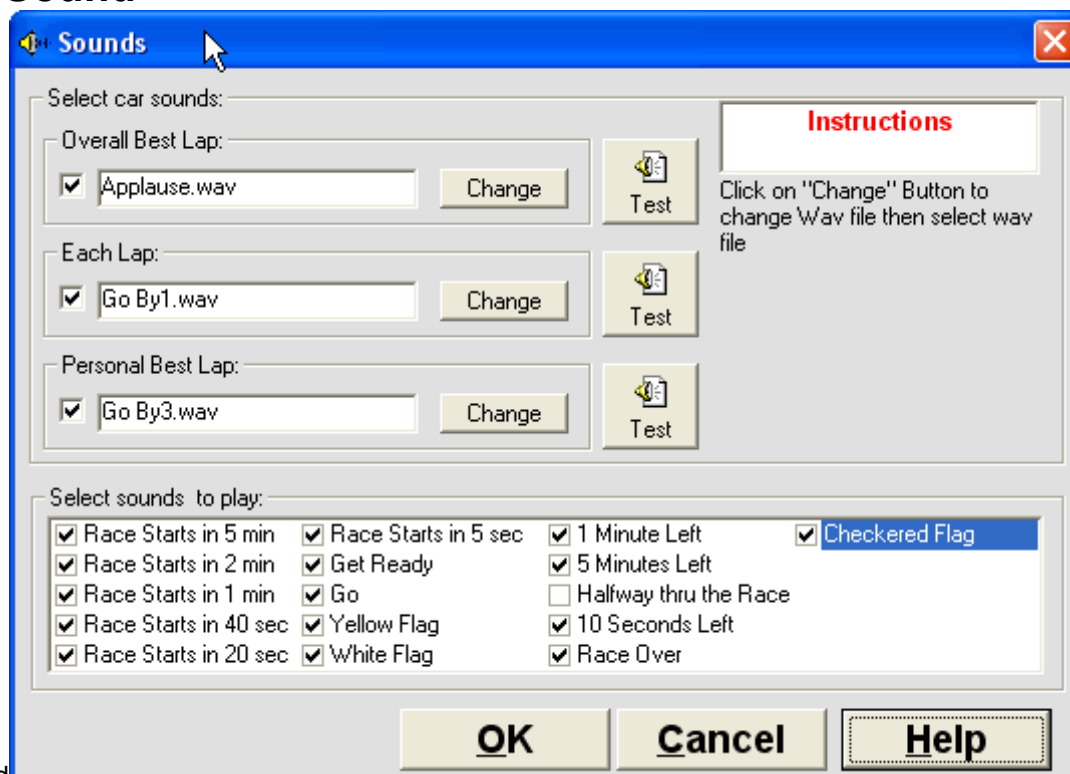


Minimum Lap Time: It's very important that you have this set below the best possible lap time.

Start Delay: A count down delay before race starts, can be set from 1 second to 30 minutes. It will also announce when race will start, see sound menu to enable sounds. Very handy if you have to operate the computer and race.

Auto Save: When checked it will automatically save race summary after race is completed. IT will write the files to c:\program files\IridiumV600\data Files will accumulate so you may wish delete some occasionally

5.3 Sound



Sound

Sound files are found in c:\program files\Iridium600\sound

For Overall Best Lap, Each Lap, Personal Best you can easily change sound to any .wav file you have on your disk drive by using the *change* button. To customize the other sounds you will need to manually replace the .wav file in the sound directory.

At Trackmate we love the applause.wav sound for overall best lap

5.4 Add Transponders/Racers

Each Transponder has a unique ID so we can associate a name to each one.



If only 4 digits are on the transponder enter 100 and the 4 digit number

I entered 77 Dan because my car # is 77, so what ever you enter here it will appear on the race screen.

You only need to do this once. No need to add names or select name or do anything before starting race. Just click Start. Names will appear on screen automatically after their first lap.

5.5 Data Files

Data Files

All race data is stored in c:\program files\Iridium600\data by default

Data is stored in standard text files so it can be viewed with notepad and files can be emailed to racers.

To save race summary data you can use the Auto save option or you can click *View>summary* then *File>Save*

To Save lap times click *View>Lap times* *File>Save*

File>open To view previous data

Qualifying more then 14 racers

If you want to qualify more then 14 racers, this is how you would do it.

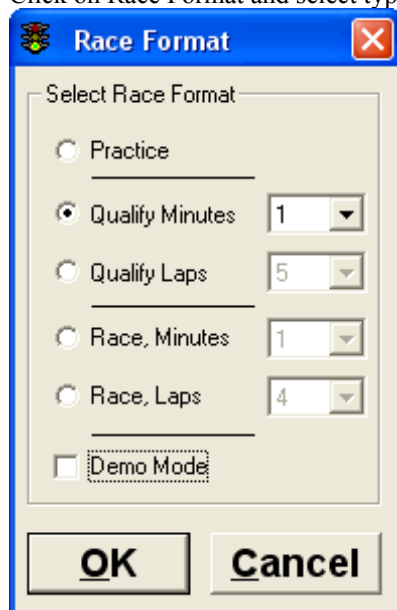
Do one qualifying session when session is over save it to disk. To save click *View>Summary* then *File>save*

Run your second qualifying then save it to disk, now do *View>Summary* *File>append* and select the first qualifying session you did. You will now have both session merged together, you can now sort on any field such as best lap.

6. Running a Race

6.1 Quick Guide

Click on Race Format and select type of race

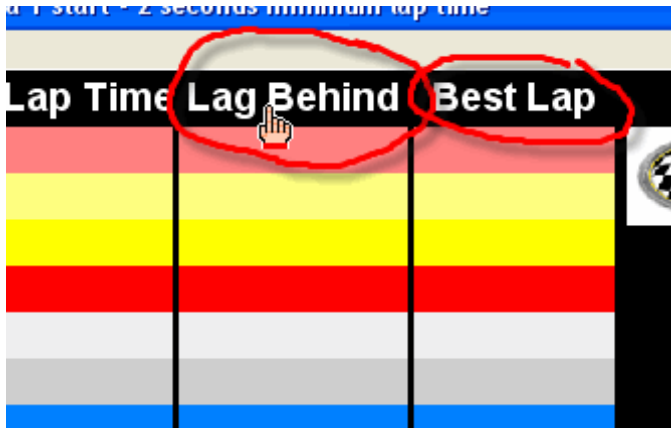


Click start on main screen to Start Race

Starting a Race

To start a race is easy just click the START button. You can change the race format by clicking Race Format. There is no need to enter the names of racers that will be in the race. Racers names and data will automatically appear on screen after their first lap.

Display Screen



Click on the column heading to change what type of data will be displayed on the screen. Choices are described below.

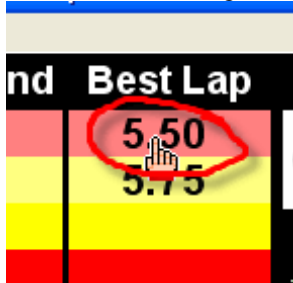
Lag Behind = time racer is lagging behind racer ahead.

Lag First = time racer is lagging behind racer in first position

Median = Is like average time, but is a much better indicator as it won't be skewed by really bad lap times caused by crashes. If you have a median of 9.0 seconds it means 50% of your laps are faster then 9.0 seconds and 50% are slower then 9.0

Reset Best Lap

You can reset best lap on screen. This would normally be used in practise. To reset best lap just click on it



7. FAQ and Trouble Shooting

How do I remove it out of DEMO mode?

Go to Settings>Installation Settings and select *Iridium*

Testing

Laps are counted when the transponder leaves the sensor bridge not when entering it. Remember this when testing, as it may give the impression that the transponder is not working, you must remove transponder away from sensor before it counts lap. The Yellow LED will turn on, on the controller when the transponder is with in range of the overhead detectors.

It Won't count laps

Is the green light ON, on the controller? If not check power plug

Does the yellow LED come on when transponder is in range? If not check overhead detector cables.

Did you click start button on main screen to start Race? Clock must be counting to count laps

If the above is ok, make sure you have the correct com port selected in the settings.

It only counts every 2nd lap

Check the minimum lap time setting. It should be set lower then the best possible lap time.

Transponder LED blinks rapidly

Very low battery voltage,

Could be plugged in backwards

Test in different car

ID shows up on screen instead of name

Go to Racers and Verify that correct ID number was entered

8. Hot Keys

Shortcut keys for main window

Key(s) Description

F1 Help

F4 Lag Behind, Lag First, Median

F5 Best Lap, MPH, Median

F8 Decrease font size on main screen

F9 Increase font size on main screen

CLTL+D Diagnostic

CLTL+F RaceFormat

CLTL+L View Laps

CLTL+O Open File, Laps or Summary

CLTL+Q Quit / Exit

CLTL+R Racers

CLTL+S Settings

CLTL+T

CLTL+U View Summary

1-9 Reset Best Lap for that ID (Number in Left Column not transponder ID)

9. Contact Info

Oct 2009

Trackmate Racing

Web: www.trackmateracing.com

Supoort: support@trackmateracing.com

Sales: sales@trackmateracing.com

Trackmate Racing

14624 - 102 Ave

Surrey BC,

V3R7E5

Canada

877-756-8227 Toll Free USA and Canada

604-582-1946

Open 7 days a week

Eastern Time : Noon to Midnight Best time to call 2:00pm to 8:00pm

Pacific Time: 9:00am to 9:00pm Best time to call 11:00am to 5:00pm

10. Warranty

All hardware has a one year warranty.

Before returning product contact Trackmate Racing for an RMA (Return Merchandise Authorization) number.

If shipping from outside of Canada

Please return defective merchandise **via US Postal Service.**

DO NOT Return merchandise via UPS ground or FedEx ground this will cause service charges as high as \$35 for customs and tax collections at our end.

You will be asked to fill out a customs form Please write under description *Electronics returned for warranty repair* and under **value \$10**

If you have any questions you can call 604-582-1946 or Toll Free at 877-756-8227

Trackmate Racing

14624 - 102 Ave

Surrey BC,

V3R7E5

Canada